

# News from Virginia LISC

## Inside the March Issue

Community Highlights	2
Food Deserts	3

The Virginia Local Initiatives Support Corporation (LISC) is dedicated to helping community residents transform distressed neighborhoods into healthy and sustainable communities of choice and opportunity — good places to work, do business and raise children. LISC mobilizes corporate, government and philanthropic support to provide local community development organizations with:

- loans, grants and equity investments
- local, statewide and national policy support
- technical and management assistance

Contact Candice Streett  
Executive Director  
cstreett@lisc.org  
804.358.7602, ext. 11

Veronica Jemmott  
Community Partnerships  
Manager  
vjemmott@lisc.org, ext. 12

Frances Stanley  
GIS/Research Analyst  
fstanley@lisc.org, ext. 13

## Community Organizer visits Battersea and Fulton

Jim Capraro was in Petersburg and Richmond January 23 and 24 providing training for community leaders from Battersea and Greater Fulton.



Jim has been a community organizer and developer for over 35 years and also directed a very successful community development organization in Chicago. Currently serving as a Senior Fellow at The Institute for Comprehensive Community Development and Principal at Capraro Consulting, Jim is visiting LISC local sites training neighborhood leaders in comprehensive community development. With **Battersea and Fulton completing their quality of life plans, Jim's focus for these trainings was on implementation.** Participants learned about the roles of lead agencies, partner organizations and LISC in implementation of the plans. He also worked with the leaders on strategies for implementation, building leadership in transient neighborhoods, leveraging resources and promoting their **Neighborhoods Rising projects.** Jim also shared the “old model” and “new model” of community development, with the One Man Band serving as the illustration of the “old model” where each organization tried to do it all. The “new model” illustration used was that of the conductor leading an orchestra, where each organization has a role in redeveloping a community. For more information on the Institute for Comprehensive Community Development visit [www.instituteccd.org](http://www.instituteccd.org).

## Community Highlights

- On January 29, 2012, the Better Housing Coalition (BHC) and the Restoration of Petersburg Community Development Corporation (ROPCDC) held a dedication and ribbon-cutting ceremony for their senior affordable housing complex, **Claiborne Square**. The two groups have been working together for over the last four years on what is the largest development project to be developed following the **Strategic Investment Plan for Petersburg— a plan** created by residents of Petersburg working with Virginia



LISC. Claiborne Square, located in the Halifax neighborhood of Petersburg, includes 47 units of one- and two-bedroom apartments, energy-efficient features that reduce utility bills, a large community room, a library, a private terrace, on-site laundry facilities, an elevator and secured entrances.

- On February 28, 2012, Petersburg City Council voted to seek \$5 million in general obligation bonds to assist in funding the construction of the new **Petersburg Library**. This is great news for the citizens of Petersburg. Virginia LISC was involved at the beginning of the project providing a predevelopment loan to the Petersburg Library Foundation.
- The **Halifax Partnership** is a group of organizations committed to share information on development strategies in an effort to foster collaboration, partnership and efficient use of city and community resources. The group recently met for a presentation by Ken Poore. Mr. Poore is a consultant for the Petersburg Community Development Corporation (PCDC) doing an analysis of housing needs in Halifax. He presented to the Partnership his approach to completing a land use plan that would address housing in a several block area of Halifax.



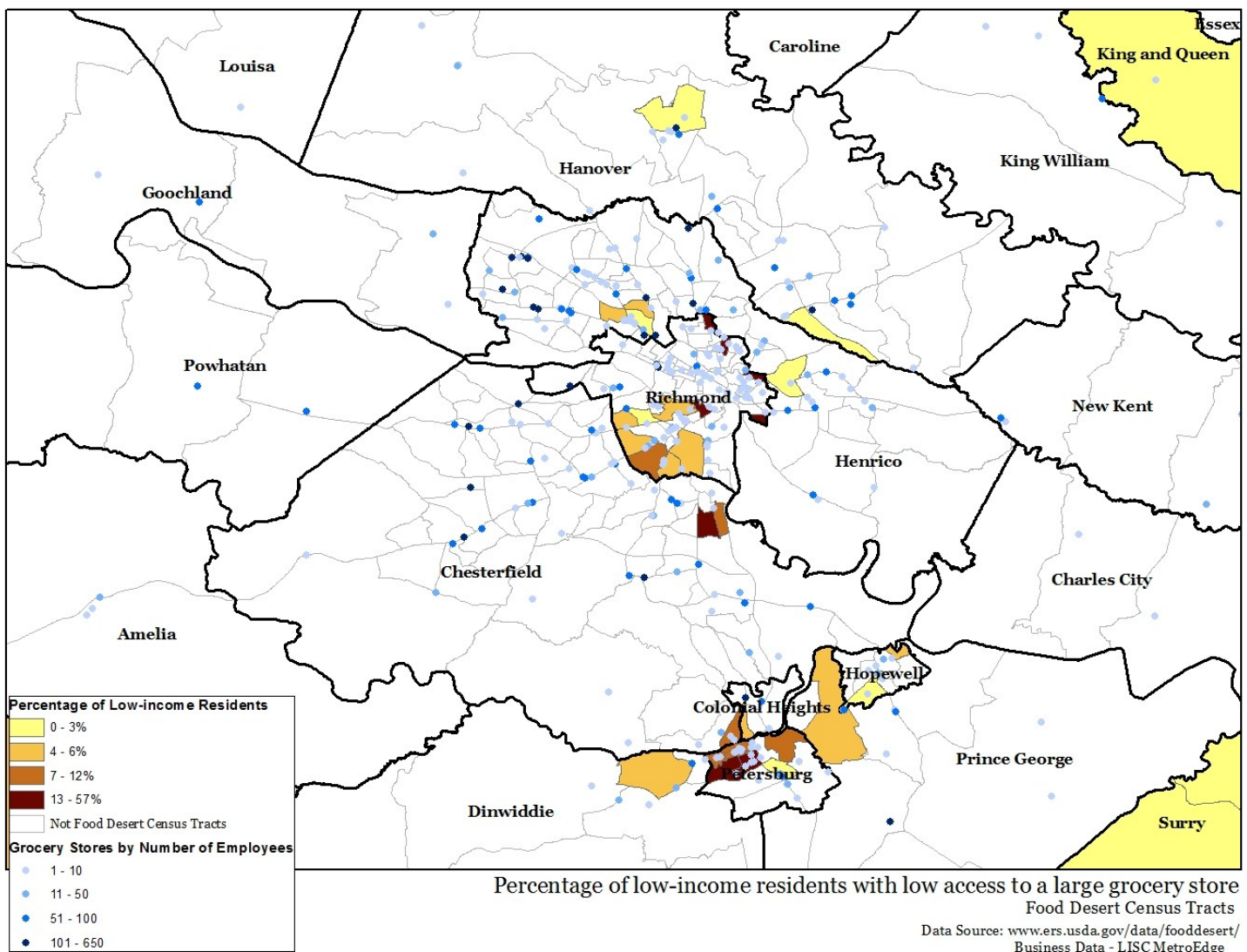
**Mark your Calendars**  
**Petersburg Housing Summit**  
**June 22, 2012**  
**More information to follow**



# Food Deserts

The U.S. Department of Agriculture (USDA), along with their partners the U.S. Department of the Treasury and U.S. Department of Health and Human Services defines a food desert as a low-income census tract where either a substantial number or share of residents has low access to a supermarket or large grocery store. As a part of this definition, they define low-income tracts as those tracts with at least 20 percent of the residents have an income at or below the federal poverty levels for a family or where the median family income for the tract is at or below 80 percent of the area's median family income. Low access means that at least 33 percent of the population in the tract lives more than a mile from a supermarket or a large grocery store (in the rural area, it is more than 10 miles).

In Richmond, Mayor Jones' Food Policy Task Force has been studying the access of healthy and fresh foods by city residents. At their recommendation, Mayor Jones started a 6-month pilot grocery shuttle program that will take residents in areas the City considers to be food deserts to local grocery stores. The service will run the first Tuesday and first Saturday of each month. For more info: [richmondvacitynews.blogspot.com/2012/02/rva-shoppers-shuttle-schedule.html](http://richmondvacitynews.blogspot.com/2012/02/rva-shoppers-shuttle-schedule.html)



# Thank You

For the recent support of our *Neighborhoods Rising Initiatives* :

## ***United Way of Greater Richmond and Petersburg***



---

### **Local Advisory Committee**

**Chair : Michael Mulvihill**, *President*  
*CRT/Tanaka*

**Vice Chair: Susan Dewey**, *Executive Director*  
*VHDA*

**Ryan Ammann**, *Community Development Specialist*  
*BB&T of VA*

**John Benesole**, *Enterprise Chief Architect*  
*Capital One Bank*

**Rodney Blevins**, *Vice President*  
*Dominion*

**Regina Chaney**, *Housing Education Specialist*  
*H.O.M.E., Inc.*

**M. Maxine Cholmondeley**, *Interim Director*  
*RRHA*

**Susan Genovese**  
*Philanthropist*

**Dougal Hewitt**, *Senior Vice President*  
*Bon Secours Health System of VA*



**Laura Lafayette**, *CEO*  
*RAR*

**Penny J. McPherson**, *VP & Senior CDO*  
*Wells Fargo*

**Brent Smith**, *Associate Professor*  
*VCU*

**S. Mark Strickler**, *Director of Community Revitalization*  
*Henrico County*

**William Talley**, *Treasurer*  
*William H. Talley & Son, Inc.*

**Harry Turton**, *Regional President*  
*Union First Market Bank*

**C. F. Younger**, *Mid-Atlantic Regional Operations*  
*Nationwide Insurance*